

GA EPD PSD Webpage Overview

The screenshot shows the Georgia Environmental Protection Division's PSD Modeling Inventory webpage. The header includes the Georgia state seal, the text "GEORGIA.GOV", "Environmental Protection Division", "Georgia Department of Natural Resources", and "Georgia PSD Modeling Inventory". A "Help" button is located in the top right corner. Below the header is a search and filter section with two main input areas: "Search by County" (with a dropdown menu showing "Appling") and "Search by Address" (with a text input field for "Address, City, State or Latitude, Longitude" and a "50 KM" radius selector). Below these are several checkboxes for pollutant types: Exempt, CO, PM25, PM10, SO2, and NOx. To the right of the search section is an "Export Options" menu with buttons for "Download Aermod", "Download Excel", "Download Aermod & Excel", and "Print Map". The main content area is a map of Georgia showing major cities, highways, and county boundaries. A legend on the right side of the map defines symbols for "Title 5 Facility", "Synthetic Minor Facility", "Search Location", "Search Radius", "State", and "Counties". The map is powered by Esri.

Search / Filter Parameters

Help

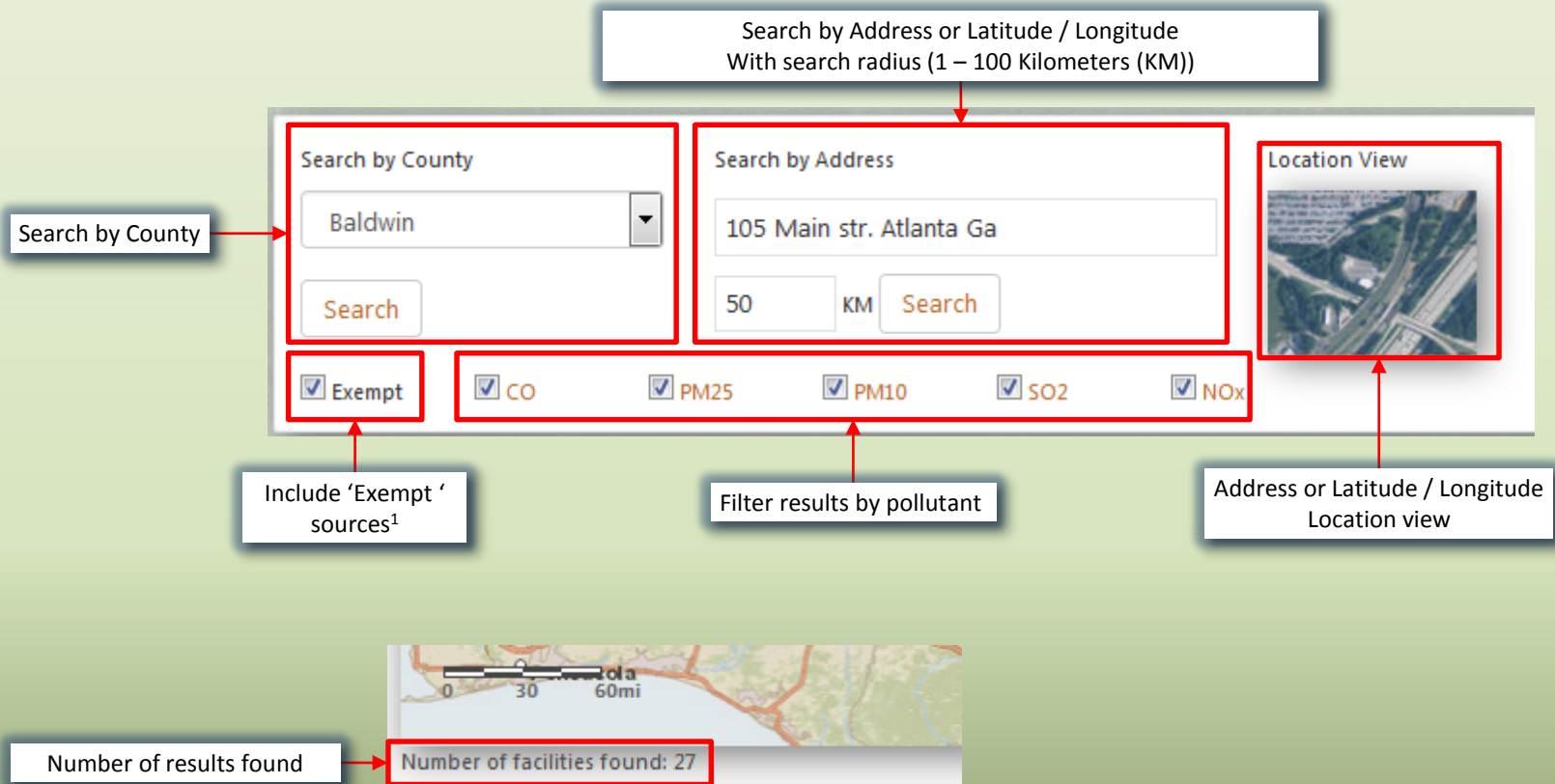
Help Documentation

Download Aermod
Download Excel
Download Aermod & Excel
Print Map

Export Options

Map

Search / Filter Function



¹The definition of "exempt" for the purposes of the PSD modeling inventory includes sources with VOC/HAP emissions only and/or sources with emissions below 20 tpy NO_x (ozone attainment), 5 tpy NO_x (ozone non-attainment), 20 tpy PM₁₀, PM_{2.5}, and SO₂, and 50 tpy CO.

Navigation Controls

The image shows a map of the Southeastern United States with several navigation and control elements highlighted by red boxes and labels:

- Zoom In / Out:** A box containing a plus sign (+) and a minus sign (-) for zooming.
- Search Results:** A red box around a cluster of red and blue circular markers in the Atlanta area.
- Toggle Basemap:** A box containing a satellite image icon and the word "Satellite".
- Map Legend:** A large box on the right side containing a legend with the following items:
 - Title 5 Facility: Red circle
 - Synthetic Minor Facility: Blue circle
 - Search Location: Green circle
 - Search Radius: Green circle with a dashed outline
 - State: Blue dashed outline
 - Counties: Blue dashed outline
- Map Scale:** A box containing a scale bar showing 0, 30, and 60 miles.



Simply click or hold keyboard arrows to pan around the map.

Shift + left mouse click will allow you to draw a box around the extent of an area you wish to zoom to. Let go and the viewer will zoom to this extent.

Identify Function

Facility Name

Dahlberg Combustion Turbine Plant

AIRS #: 15700034
Address: 585 Jarrett Road,
Nicholson, Georgia 30565
County: Jackson

Pollutants (in tons per year)

| CO | PM25 | PM10 | SO2 | NOx |
|-----|------|------|-----|------|
| 707 | 96 | 96 | 14 | 1190 |

Zoom to

Facility information including AIRS#, Address, County and Pollutant Emissions

Close Dialog box

Detailed description: This image shows a map interface with a red circle highlighting a facility. A dialog box is open, displaying the facility's name, AIRS number, address, county, and a table of pollutant emissions in tons per year. A 'Zoom to' link is at the bottom of the dialog. A red arrow points from the 'Facility Name' label to the dialog title. Another red arrow points from the 'Close Dialog box' label to the close button in the dialog's title bar.

Baldor Electric Company

AIRS #: 05900048
Address: 197 Collins Industrial
Boulevard, Athens, Georgia 30601
County: Clarke

Exempt from NAAQS and PSD
Increment modeling. Emissions
below 20 tpy NOX (ozone
attainment), 5 tpy NOX (ozone
non-attainment), 20 tpy PM10,
PM2.5, and SO2, and 50 tpy CO.

Zoom to

Result for exempt facilities.

Detailed description: This image shows a map interface with a red circle highlighting a facility. A dialog box is open, displaying the facility's name, AIRS number, address, county, and a text-based exemption notice. A 'Zoom to' link is at the bottom of the dialog. A red arrow points from the 'Result for exempt facilities.' label to the exemption text in the dialog.

Exporting Search Content

Download a .zip file with Aermod ready model files

Download Aermod

Download Excel

Download Aermod & Excel

Print Map

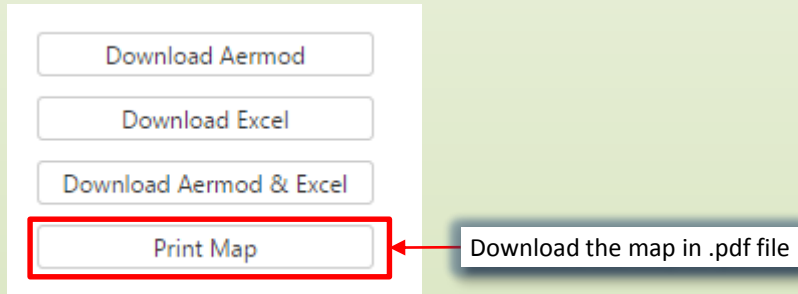
Download a .zip file with information in Excel format

Download a .zip file with Aermod and Excel files

| | | |
|--------------------|----------|-------|
| CO_longterm.txt | | .txt |
| CO_shortterm.txt | | .txt |
| NOx_longterm.txt | | .txt |
| NOx_shortterm.txt | | .txt |
| PM10_longterm.txt | | .txt |
| PM10_shortterm.txt | | .txt |
| PM25_longterm.txt | | .txt |
| PM25_shortterm.txt | | .txt |
| SO2_longterm.txt | | .txt |
| SO2_shortterm.txt | | .txt |
| Summary_2015 | 931.xlsx | .xlsx |

Example of download Aermod & Excel output:
Includes Aermod ready short term and long term .txt files for modeling and Excel file

Printing Options



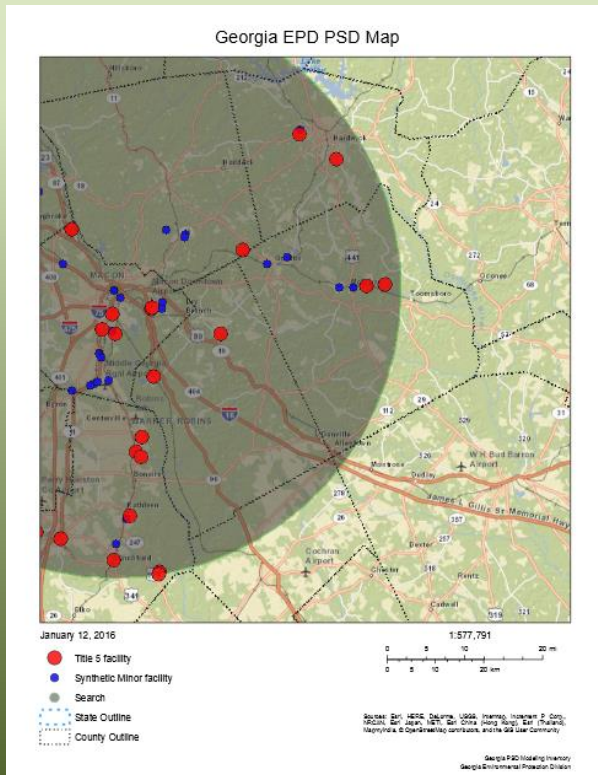
Download Aermod

Download Excel

Download Aermod & Excel

Print Map

Download the map in .pdf file



Be sure to enable pop-ups
for your web browser



Pop-up blocked

The following pop-ups were blocked on this page:

- https://sampleserver6.arcgisonline.com/ar..._ags_198-c93944f72467287-c4340d22fe3c9e.pdf

Always allow pop-ups from psd.georgiaair.org

Continue blocking pop-ups

[Manage pop-up blocking...](#)

Done